



# ELK Biotechnology

$\beta$  I tubulin Mouse mAb

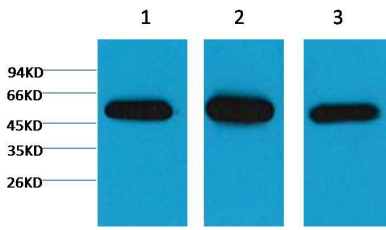
Catalog NO.: EM1036

For research use only.

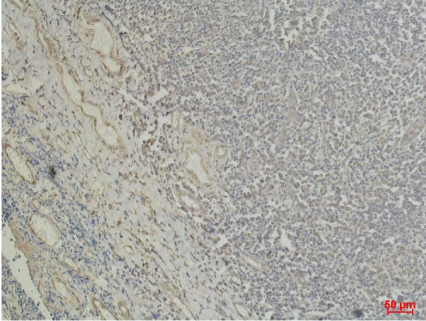
## Overview

---

Product name	$\beta$ I tubulin Mouse Monoclonal antibody
Source	Mouse
Applications	<b>WB IHC</b>
Species reactivity	<b>Human Rat Mouse</b>
Recommended dilutions	<b>WesternBlot:1/5000-10000</b> <b>Immunohistochemistry:1/200-500</b> <b>NOTE: Optimal dilutions should be determined by the end user.</b>
Immunogen	Synthetic Peptide
Species	Human
Storage	PBS with 0.02% sodium azide and 50% glycerol pH 7.4. Store at -20° C. Avoid repeated freeze-thaw cycles.
Isotype	IgG1
Clonality	Monoclonal
Concentration	1 mg/ml
Observed band	<b>50kDa</b>
GeneID (Human)	81027
Human Swiss-Prot No.	Q9H4B7
Cellular localization	CytoplasmCytoskeletonMicrotubule
Alternative Names	beta I tubulin TBB1 TUBB1 Tubulin beta Class VI beta tubulin
Background	Tubulin is one of several members of a small family of globular proteins. The tubulin superfamily includes five distinct families the alpha- beta- gamma- delta- and epsilon-tubulins. The most common members of the tubulin family are $\alpha$ -tubulin and $\beta$ -tubulin the proteins that make up microtubules. Each has a molecular weight of approximately 55 KD. Microtubules are assembled from dimers of $\alpha$ - and $\beta$ -tubulin.



Western blot analysis of) Hela 2) Mouse Brain Tissue 3) Rat Brain Tissue with EM1036 diluted at:5000.



Immunohistochemical analysis of paraffin-embedded Human Tonsil Tissue using  $\beta$  I tubulin (EM1036) Mouse mAb diluted at:500.