



ELK Biotechnology

GAPDH(HRP Conjugated) Mouse mAb

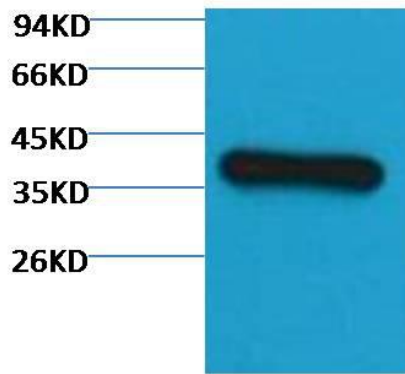
Catalog NO.: EM1039

For research use only.

Overview

Product name	GAPDH(HRP Conjugated) Mouse Monoclonal antibody
Source	Mouse
Applications	WB
Species reactivity	Human Rat Mouse Monkey Dog Chicken Hamster Rabbit Pig Sheep Insect Yeast
Recommended dilutions	WesternBlot:1/2000-5000 Immunohistochemistry:1/100 NOTE: Optimal dilutions should be determined by the end user.
Immunogen	Synthetic Peptide
Species	Human
Storage	PBS with 0.02% sodium azide and 50% glycerol pH 7.4. Store at -20° C. Avoid repeated freeze-thaw cycles.
Isotype	IgG1
Clonality	Monoclonal
Concentration	1 mg/ml
Observed band	37kDa
GeneID (Human)	2597
Human Swiss-Prot No.	P04406
Cellular localization	CytoplasmCytoskeletonMembraneNucleus
Alternative Names	G3PD G3PDH GAPD Glyceraldehyde 3 phosphoate dehydrogenase MGC102544
Background	Glyceraldehyde 3 phosphate dehydrogenase (GAPDH) is well known as one of the key enzymes involved in glycolysis. GAPDH is constitutively expressed in almost all tissues at high levels therefore antibodies against GAPDH are useful as loading controls for Western Blotting. Some physiological factors such as hypoxia and diabetes increase GAPDH

expression in certain cell types.



Western blot analysis of Hela with EM1039 diluted at:3000.