



# ELK Biotechnology

## Cyclophilin B Mouse mAb

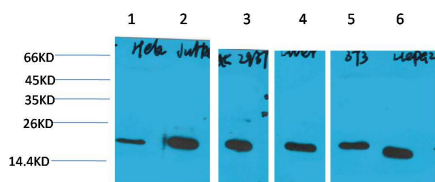
Catalog NO.: EM1219

For research use only.

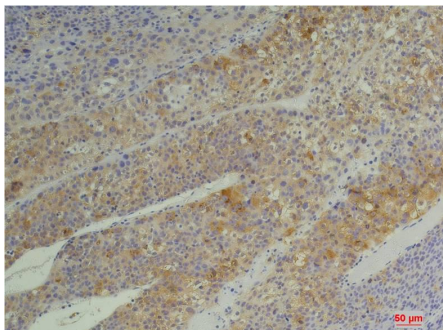
### Overview

---

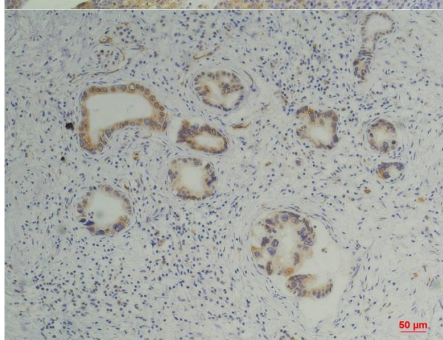
Product name	Cyclophilin B Mouse Monoclonal antibody
Source	Mouse
Applications	<b>WB IHC</b>
Species reactivity	<b>Human Rat Mouse</b>
Recommended dilutions	<b>WesternBlot:1/1000-2000</b> <b>Immunohistochemistry:1/100-200</b> <b>NOTE: Optimal dilutions should be determined by the end user.</b>
Immunogen	Synthetic Peptide
Species	Human
Storage	PBS with 0.02% sodium azide and 50% glycerol pH 7.4. Store at -20° C. Avoid repeated freeze-thaw cycles.
Isotype	IgG1
Clonality	Monoclonal
Concentration	1 mg/ml
Observed band	<b>21kDa</b>
GeneID (Human)	5479
Human Swiss-Prot No.	P23284
Cellular localization	Endoplasmic reticulum lumenMelanosome
Alternative Names	Cphn2 MGC2224 Rotamase S cyclophilin CYPB CyP-S1Rotamase B
Background	Cyclophilin B (CyPB) is an ER-localized chaperone protein belonging to the family of peptidyl-prolyl cis-trans isomerases.



Western blot analysis of) HeLa 2)Jurkat 3)293T 4)Rat Liver Tissue 5) 3T3 6) HepG2 with Cyclophilin B Mouse mAb EM1219 diluted at:2000.



Immunohistochemical analysis of paraffin-embedded Human Hepatocarcinoma using Cyclophilin B ( EM1219 ) Mouse mAb diluted at:200.



Immunohistochemical analysis of paraffin-embedded Human Pancreatic Carcinoma using Cyclophilin B ( EM1219 ) Mouse mAb diluted at:200.