



ELK Biotechnology

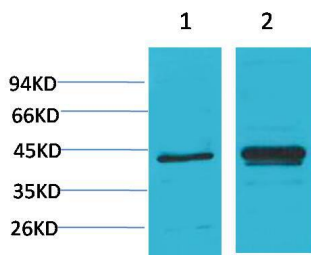
I κ B α Rabbit pAb

Catalog NO.: EA213

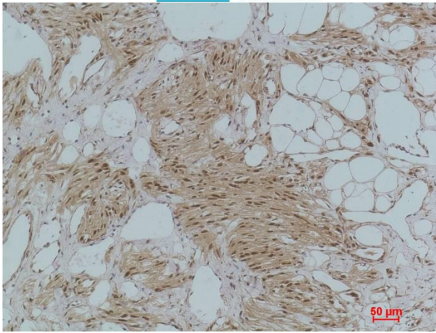
For research use only.

Overview

Product name	I κ B α Rabbit polyclonal antibody
Source	Rabbit
Applications	WB, IHC
Species reactivity	Human, Rat
Recommended dilutions	WesternBlot:1/2000-5000 Immunohistochemistry:1/200-500 NOTE: Optimal dilutions should be determined by the end user.
Immunogen	Recombinant Protein
Species	Human
Storage	PBS with 0.02% sodium azide and 50% glycerol pH 7.4. Store at -20° C. Avoid repeated freeze-thaw cycles.
Isotype	IgG
Clonality	Polyclonal
Concentration	1 mg/ml
Observed band	40kDa
GeneID (Human)	4792
Human Swiss-Prot No.	P25963
Cellular localization	Cytoplasm,Nucleus
Alternative Names	I kappa B alpha antibody, I κ B-alpha antibody, IKBA antibody, MAD3 antibody, NF κ B inhibitor antibody
Background	Inhibits the activity of dimeric NF-kappa-B/REL complexes by trapping REL dimers in the cytoplasm through masking of their nuclear localization signals. I κ B α phosphorylation and resulting Rel-dependent transcription are activated by a highly diverse group of extracellular signals including inflammatory cytokines, growth factors, and chemokines.



Western blot analysis of 1) Hela, 2)PC12 with κ B α Rabbit pAb EA213 diluted at 1:2,000.



Immunohistochemical analysis of paraffin-embedded Human Kidney Tissue using κ B α (EA213) Rabbit pAb diluted at 1:500.