



ELK Biotechnology

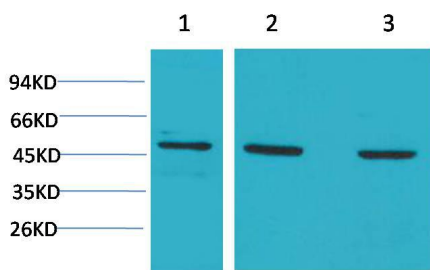
MEK5 Rabbit pAb

Catalog NO.: EA222

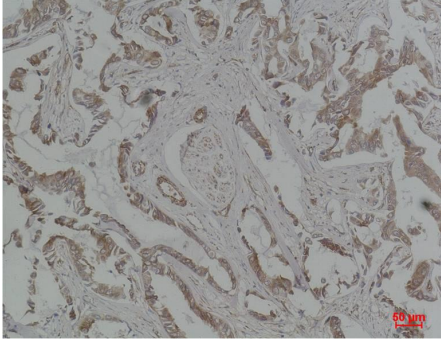
For research use only.

Overview

Product name	MEK5 Rabbit polyclonal antibody
Source	Rabbit
Applications	WB, IHC
Species reactivity	Human, Rat, Mouse
Recommended dilutions	WesternBlot:1/1000-2000 Immunohistochemistry:1/200-500 NOTE: Optimal dilutions should be determined by the end user.
Immunogen	Recombinant Protein
Species	Human
Storage	PBS with 0.02% sodium azide and 50% glycerol pH 7.4. Store at -20° C. Avoid repeated freeze-thaw cycles.
Isotype	IgG
Clonality	Polyclonal
Concentration	1 mg/ml
Observed band	49kDa
GenelD (Human)	5067
Human Swiss-Prot No.	Q13163
Cellular localization	Cytoskeleton,Cytosol,Nucleus
Alternative Names	MP2K5 antibody, MAPK kinase kinase 5 antibody, MEK5 antibody, PRKMK 5 antibody
Background	Dual specificity mitogen-activated protein kinase kinase 5 is an enzyme that in humans is encoded by the MAP2K5 gene.The protein encoded by this gene is a dual specificity protein kinase that belongs to the MAP kinase kinase family. This kinase specifically interacts with and activates MAPK7/ERK5.



Western blot analysis of 1) HeLa, 2)3T3, 3)PC12 with MEK5 Rabbit pAb EA222 diluted at 1:2,000.



Immunohistochemical analysis of paraffin-embedded Human Breast Carcinoma using MEK5 (EA222) Rabbit pAb diluted at 1:500.