



ELK Biotechnology

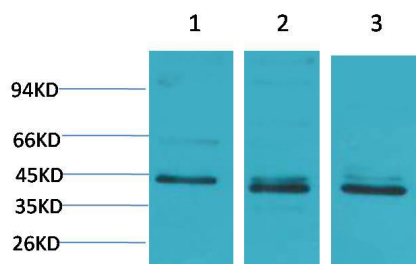
c-Jun Rabbit pAb

Catalog NO.: EA248

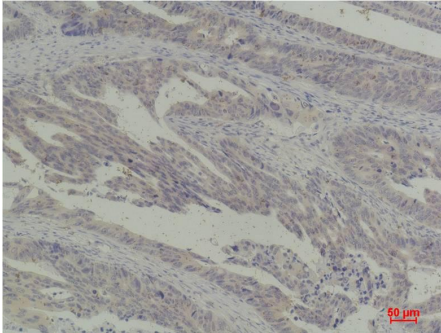
For research use only.

Overview

Product name	c-Jun Rabbit polyclonal antibody
Source	Rabbit
Applications	WB, IHC
Species reactivity	Human, Mouse
Recommended dilutions	WesternBlot:1/1000-2000 Immunohistochemistry:1/50-100 NOTE: Optimal dilutions should be determined by the end user.
Immunogen	Recombinant Protein
Species	Human
Storage	PBS with 0.02% sodium azide and 50% glycerol pH 7.4. Store at -20° C. Avoid repeated freeze-thaw cycles.
Isotype	IgG
Clonality	Polyclonal
Concentration	1 mg/ml
Observed band	43kDa
GeneID (Human)	3725
Human Swiss-Prot No.	P05427
Cellular localization	Nucleus
Alternative Names	Activator Protein 1 antibody, AP1 antibody, p39 antibody
Background	c-Jun is a member of the Jun Family containing c-Jun, JunB and JunD, and is a component of the transcription factor AP-1 (activator protein-1).



Western blot analysis of 1) 293T, 2)Hela, 3) 3T3 with c-Jun Rabbit pAb EA248 diluted at 1:2,000.



Immunohistochemical analysis of paraffin-embedded Human Breast Carcinoma using c-Jun(EA248) Rabbit pAb diluted at 1:200.