



ELK Biotechnology

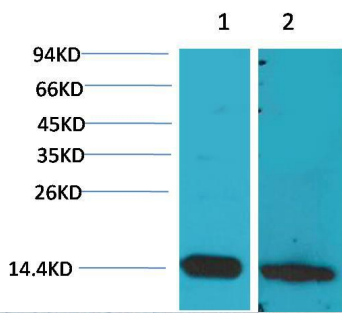
S100 β Rabbit pAb

Catalog NO.: EA254

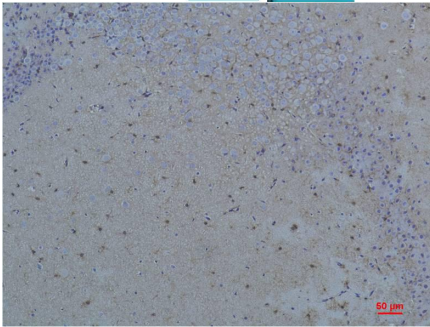
For research use only.

Overview

| | |
|-----------------------|---|
| Product name | S100 β Rabbit polyclonal antibody |
| Source | Rabbit |
| Applications | WB, IHC |
| Species reactivity | Human, Rat, Mouse |
| Recommended dilutions | WesternBlot:1/1000-2000 Immunohistochemistry:1/50-100 NOTE: Optimal dilutions should be determined by the end user. |
| Immunogen | Recombinant Protein |
| Species | Human |
| Storage | PBS with 0.02% sodium azide and 50% glycerol pH 7.4. Store at -20° C. Avoid repeated freeze-thaw cycles. |
| Isotype | IgG |
| Clonality | Polyclonal |
| Concentration | 1 mg/ml |
| Observed band | 11kDa |
| GeneID (Human) | 6285 |
| Human Swiss-Prot No. | P04271 |
| Cellular localization | Cytoplasm, Nucleus |
| Alternative Names | Protein S100-B antibody, S 100 calcium binding protein beta chain antibody, S100B antibody |
| Background | Despite their relatively small size (8-12 kDa) and uncomplicated architecture, S100 proteins regulate a variety of cellular processes such as cell growth and motility, cell cycle progression, transcription, and differentiation. |



Western blot analysis of 1) Mouse Brain Tissue, 2) Rat Brain Tissue with S100 β Rabbit pAb EA254 diluted at 1:2,000.



Immunohistochemical analysis of paraffin-embedded Rat Brain Tissue using S100 β (EA254) Rabbit pAb diluted at 1:200.