



Recombinant HIV gp120 (C-8His)

Catalog #	EPT033
Expression Host	Human Cells
DESCRIPTION	Recombinant HIV 1 Envelope Glycoprotein Gp120 is produced by our Mammalian expression system and the target gene encoding Met1-Glu498 is expressed with a 8His tag at the C-terminus.
Accession	Q9DKG6
Synonyms	Envelope glycoprotein gp120; Glycoprotein 120; Surface protein gp120
Mol Mass	57 KDa
AP Mol Mass	90-140 KDa, reducing conditions
Purity	Greater than 95% as determined by reducing SDS-PAGE.
Endotoxin	Less than 0.1 ng/μg (1 EU/μg) as determined by LAL test.
FORMULATION	Lyophilized from a 0.2 μm filtered solution of PBS, pH 7.4.
RECONSTITUTION	Always centrifuge tubes before opening. Do not mix by





vortex or pipetting.

It is not recommended to reconstitute to a concentration less than 100µg/ml.

Dissolve the lyophilized protein in distilled water.

Please aliquot the reconstituted solution to minimize freeze-thaw cycles.

SHIPPING

The product is shipped at ambient temperature.

Upon receipt, store it immediately at the temperature listed below.

STORAGE

Lyophilized protein should be stored at $< -20^{\circ}\text{C}$, though stable at room temperature for 3 weeks.

Reconstituted protein solution can be stored at $4-7^{\circ}\text{C}$ for 2-7 days.

Aliquots of reconstituted samples are stable at $< -20^{\circ}\text{C}$ for 3 months.

BACKGROUND

Envelope glycoprotein gp160 is single-pass type I membrane protein. The mature envelope protein (Env) consists of a homotrimer of non-covalently associated gp120-gp41 heterodimers. It is cleaved into the following 2 chains: glycoprotein 120 and transmembrane protein gp41. The resulting complex protrudes from the virus surface as a spike. The 17

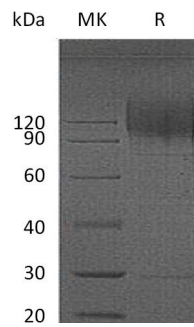




ELK Biotechnology

amino acids long immunosuppressive region is present in many retroviral envelope proteins. Synthetic peptides derived from this relatively conserved sequence inhibit immune function in vitro and in vivo.

SDS-PAGE



+86-27-59760950

ELKbio@ELKbiotech.com

www.elkbiotech.com

23-2, No.388 Gaoxin 2nd Road, Wuhan East Lake Hi-tech Development Zone, Hubei, P.R.C