



Recombinant Human AFP (C-6His)

| | |
|------------------------|--|
| Catalog # | EPT109 |
| Expression Host | Human Cells |
| DESCRIPTION | Recombinant Human Alpha-fetoprotein is produced by our Mammalian expression system and the target gene encoding Arg19-Val609 is expressed with a 6His tag at the C-terminus. |
| Accession | P02771 |
| Synonyms | Alpha-fetoprotein; Alpha-1-fetoprotein; Alpha-fetoglobulin; AFP; HPAFP |
| Mol Mass | 67.3 KDa |
| AP Mol Mass | 65-70 KDa, reducing conditions |
| Purity | Greater than 95% as determined by reducing SDS-PAGE. |
| Endotoxin | Less than 0.1 ng/μg (1 EU/μg) as determined by LAL test. |
| FORMULATION | Lyophilized from a 0.2 μm filtered solution of PBS, pH 7.4. |
| RECONSTITUTION | Always centrifuge tubes before opening. Do not mix by |





vortex or pipetting.

It is not recommended to reconstitute to a concentration less than 100µg/ml.

Dissolve the lyophilized protein in distilled water.

Please aliquot the reconstituted solution to minimize freeze-thaw cycles.

SHIPPING

The product is shipped at ambient temperature.

Upon receipt, store it immediately at the temperature listed below.

STORAGE

Lyophilized protein should be stored at $< -20^{\circ}\text{C}$, though stable at room temperature for 3 weeks.

Reconstituted protein solution can be stored at $4-7^{\circ}\text{C}$ for 2-7 days.

Aliquots of reconstituted samples are stable at $< -20^{\circ}\text{C}$ for 3 months.

BACKGROUND

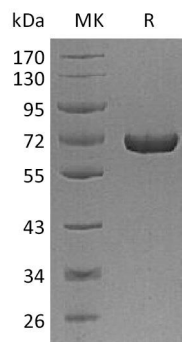
Alpha-fetoprotein (AFP) is classified as a member of the albuminoid gene superfamily consisting of albumin, AFP, vitaminD (Gc) protein, and alpha-albumin. AFP is a glycoprotein of 591 amino acids and a carbohydrate moiety. AFP is a major plasma protein produced by the yolk sac and the liver during fetal development. It is thought to be the fetal





form of serum albumin. AFP binds to copper, nickel, fatty acids and bilirubin and is found in monomeric, dimeric and trimeric forms. AFP is one of the several embryo-specific proteins and is adominant serum protein as early in human embryonic life as one month, when albumin and transferrin are present in relatively small amounts. It is first synthesized in the human by the yolk sac and liver (1-2 months) and subsequently predominantly in the liver. A small amount of AFP is produced by the GI tract of the human conceptus. It has been proved that AFP may reappear in the serum in elevated amounts in adult life in association with normal restorative processes and with malignnt growth. Alpha-fetoprotein (AFP) is a specific marker for hepatocellular carcinoma (HCC), teratoblastomas, and neural tube defect (NTD).

SDS-PAGE





ELK Biotechnology



+86-27-59760950

ELKbio@ELKbiotech.com

www.elkbiotech.com

23-2, No.388 Gaoxin 2nd Road, Wuhan East Lake Hi-tech Development Zone, Hubei, P.R.C