



Recombinant Human RGMA (N-6His)

Catalog #	EPT154
Expression Host	E.coli
DESCRIPTION	Recombinant Human Repulsive Guidance Molecule A is produced by our E.coli expression system and the target gene encoding Pro169-Gly422 is expressed with a 6His tag at the N-terminus.
Accession	AAI51133.1
Synonyms	Repulsive guidance molecule A; RGM domain family member A; RGM
Mol Mass	29.8 KDa
AP Mol Mass	30 KDa, reducing conditions
Purity	Greater than 95% as determined by reducing SDS-PAGE.
Endotoxin	Less than 0.1 ng/μg (1 EU/μg) as determined by LAL test.
FORMULATION	Supplied as a 0.2 μ m filtered solution of 20mM Tris-HCl, 1mM DTT, 150mM NaCl, 1mM EDTA, pH 8.0.

RECONSTITUTION





SHIPPING

The product is shipped on dry ice/polar packs.

Upon receipt, store it immediately at the temperature listed below.

STORAGE

Store at $\leq -70^{\circ}\text{C}$, stable for 6 months after receipt.

Store at $\leq -70^{\circ}\text{C}$, stable for 3 months under sterile conditions after opening.

Please minimize freeze-thaw cycles.

BACKGROUND

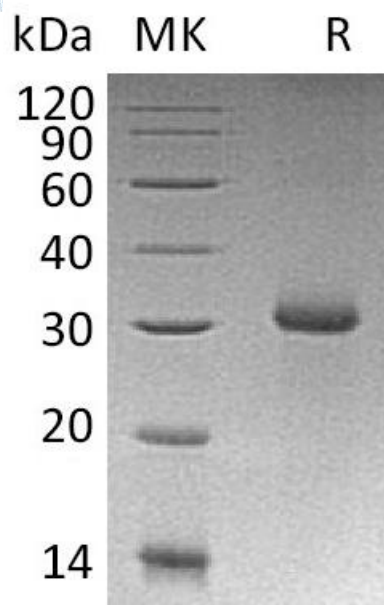
Repulsive guidance molecule A (RGMA) is a cell membrane protein and belongs to the repulsive guidance molecule (RGM) family. It interacts with NEO1, BMP2 and BMP4. RGMA is a glycosylphosphatidylinositol-anchored glycoprotein that functions as an axon guidance protein in the developing and adult central nervous system. It helps guide Retinal Ganglion Cell (RGC) axons to the tectum in the midbrain. RGMA has been implicated to play an important role in the developing brain and in the scar tissue that forms after a brain injury. This protein may also function as a tumor suppressor in some cancers.





ELK Biotechnology

SDS-PAGE



+86-27-59760950

ELKbio@ELKbiotech.com

www.elkbiotech.com

23-2, No.388 Gaoxin 2nd Road, Wuhan East Lake Hi-tech Development Zone, Hubei, P.R.C